

Graduate Process Engineers Job Description



Job Title: Graduate Process Engineer
Report to: Head Technical Operations Group
Business: FFDB UK
Location: Billingham - Teesside

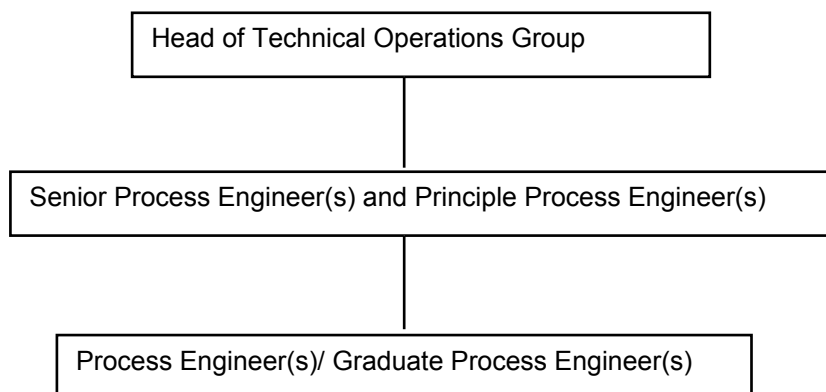
PURPOSE OF JOB

- Support the delivery of Technology Transfer objectives
- Support a consistent, rigorous and flexible technology transfer process through continuous improvement
- Support delivery of asset support projects

DIMENSIONS

Number of projects	2 -6/year
Size of projects:	Up to £0.2m
Project Duration:	3 -24 months
Capital value of plants:	£25m
Asset improvement programmes	Up to £0.2m

ORGANISATION CHART



Graduate Process Engineers Job Description

PRINCIPAL ACCOUNTABILITIES

1. Specify, purchase, design, qualify and handover effective manufacturing systems to Asset Teams ensuring plant modifications have credible delivery plans
2. Agree and through effective reporting adhere to capital expenditure plans
3. Provide process engineering expertise to the transfer and scale up of new processes and technologies to the manufacturing plants ensuring all aspects of SHE and cGMP compliance are addressed.

CORE COMPETENCIES

Flexibility
Able to alter behaviour and opinions in the light of new information or changing situations
Works around obstacles that prevent completion of a project
Sees the merits of different opinions and view points
Concern for Standards
Pursues excellence in line with the organisations norms and values
Set high personal standards as an example
Achieves professional standards in safety, quality and the scientific method
Understand consequences of not achieving standards
Concern for Impact
Actively anticipates and responds to the feelings, needs and concerns of others
Effectively communicates in order to influence others
Acts to ensure others will understand complex information
Maintains peoples self-esteem in situations of criticism
Ability to learn
Quickly understanding and applying information, concepts and strategies
Quickly understands methods of work and is able to apply processes which are being continually updated
Applies 'gemba' (go see) where methods of work are unclear or not complete

SPECIAL FEATURES

1. The job holder will be required to work flexible hours to manage peak work demands which may include periods of shift work for plant start ups and technical investigations.
2. A key feature of the job role is the ability to work in multi disciplinary development teams to ensure fast track progression from lab-based processes to established manufacture.
3. The job holder will be required to work in a cGMP environment.
4. The job holder will consult with the line management over major technical issues and work planning but otherwise must be capable of operating with minimum supervision.
5. The job holder requires an honours degree or higher qualification in Chemical Engineering (or equivalent).

Graduate Process Engineers Job Description

Accepted by(sign)(print) Date.....

Agreed by(sign)(print) Date.....