

Job Description

Job Title	Operations Engineering Manager
Job Holder	
Reports To	Head of Microbial Manufacturing
Location	Billingham
Date	December 2019
Grade	35

Job Purpose

Lead and manage the maintenance function supporting GMP manufacturing at the Billingham site. Devise and deliver the correct maintenance strategy for FDBK operations.

Dimensions

Budget	ca. £2M annual maintenance spend
No of staff reporting to individual	ca. 30 Engineers and Technicians Indirectly, third party engineers and contractors

Principal Accountabilities

Accountable for the planning and delivery of GMP manufacturing maintenance activity, on time and on budget.

Accountable for the upkeep and operation of Billingham site GMP utility systems, maintaining appropriate availability for business delivery and the correct quality compliance standards.

Oversees the liaison between internal customers and operations engineering for maintenance definition, feasibility, operability and EHS assessment. Leads the central asset maintenance group to provide an effective maintenance service to the different manufacturing units on site.

Develops best practice maintenance delivery processes and ensure compliance with Good Engineering Practice (GEP) and other applicable codes and standards.

Ensures that the operations engineering department has the technical capability to deliver statutory compliance in the areas of pressure systems, electrical, lifting equipment and the safe management of engineering work.

Leads and motivates the maintenance, reliability and utility teams, setting and demonstrating the correct standards and behaviours. Defines the correct standards for the application of on demand and shift working patterns, ensuring their application across the department.

Identifies, selects and manages third party agents to deliver engineering services to site in support of maintenance execution. Manages and delivers systems which assess the quality of third party installation works prior to handover.

Sets clear goals and targets such that maintenance and planning processes are designed, implemented and optimised. Where possible, drives the standardisation of components and parts to reduce inventories and minimise training requirements.

Generates and archives technical documentation to enable future maintenance and modification. Leads and directs technical engineers to implement new maintenance strategies.

Delivers site reliability improvement through effective root cause analysis, the 5C process and embedding of longer term improvement actions/solutions.

Manage the safe working behaviour of the operations engineering team and third party contractors, demonstrating a high regard for personal and team EHS performance, sustaining a zero overdue status of investigations and actions.

Meet the operations target of zero overdue quality actions and documentation updates, within the operations engineering team. Own the standard operating procedures and work instructions for maintenance, calibration, the computerised maintenance management system (CMMS) and the engineering stores.

Be the site subject matter expert for maintenance, presenting maintenance strategy and performance at customer audit and regulatory inspection.

Competencies

Level: Core

Assessed: Business Standards & Integrity, Change Leadership, People Development

Level: Manager / Team Leader

Assessed: Customer Focus, Analytical Thinking, Achievement & Results Orientation, Planning, Process Management



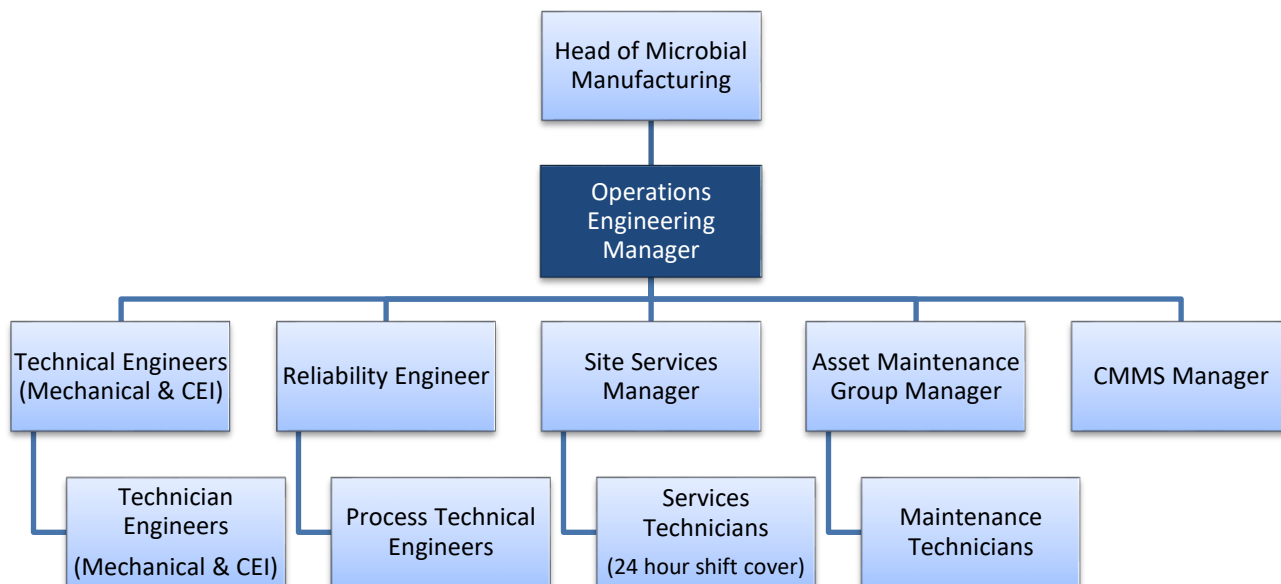
Special Features

This job role is essential to underpin the success of manufacturing assets at Billingham. The job holder's function own and operate the utility systems for all GMP assets. The job holder will be required to continuously update the site maintenance strategy to meet today's business needs, then implement that strategy to deliver a measurable improvement in performance.

Strong people management skills are essential to drive through performance improvements and challenge existing working practices.

The ability to work within a matrix organisation is essential, with multiple manufacturing streams creating potentially conflicting demands. A strong customer service focus will be essential to develop effective collaboration with other engineering groups on the site.

Organisation Chart



Signatures

Job Holder: Date:

Line Manager: Date: